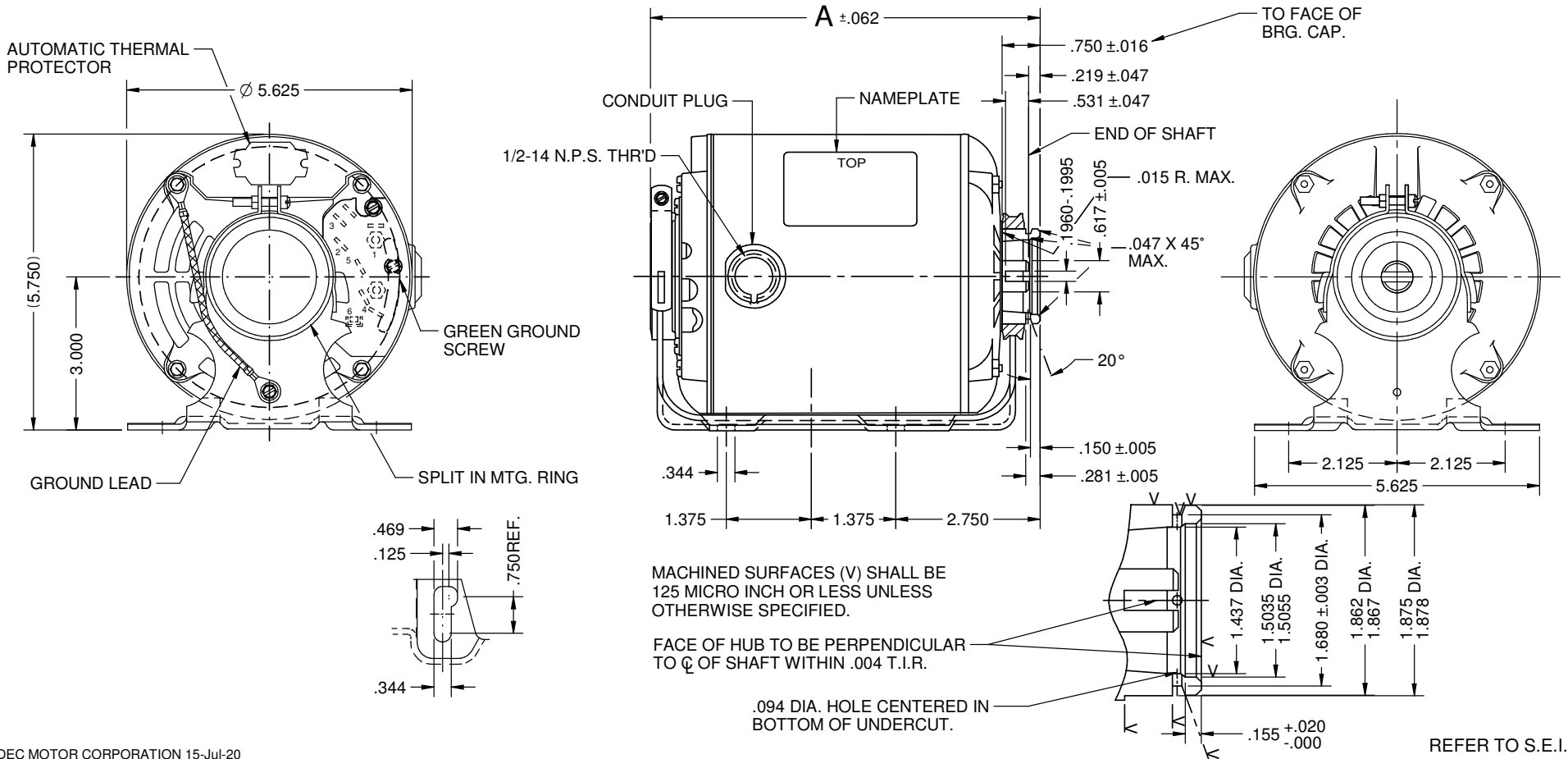




## Catalog #: 872

Model_Number:	S055PNA7672012J
PRODUCT NAME:	.75 HP - ODP - 1725
PHASETYPE:	1_SPLIT PHASE
MOTOR ENCLOSURE:	ODP
HORSEPOWER:	.75
KILOWATTS:	0.6
POLES:	4
NUMBER SPEEDS:	1
RPM:	1725
RPM 2:	1425
HERTZ:	50
HERTZ 2:	60
VOLTS PRIMARY:	115/230 V
VOLTS :	115
VOLTS 2:	230
FRME :	48
SHAFT CODE:	Z
STATOR DIAMETER:	5.5
STACK:	3
MOUNTING:	RESILIENT
MOTOR TYPE:	FHP
OPPOSITE END BEARING:	6203
SHAFT END BEARING:	6203
AMBIENT:	40
ROTATION:	CCW LEAD END REV
SERVICE FACTOR:	1
SHIPPING WEIGHT:	25
THERMAL PROTECTION:	AUTOMATIC RESET
BREAKDOWN TORQUE:	73.58
BREAKDOWN TORQUE UOM:	OZFT
LOCKED ROTOR TORQUE:	38.69
LOCKED ROTOR TORQUE UOM:	OZFT
INSULATION CLASS:	B
KVA CODE LETTER:	A
LOCKED ROTOR AMPS:	45.73
FULL LOAD AMPS PRIMARY:	10.0/4.9//9.8/4.9
SERVICE FACTOR AMPS PRIMARY:	10.0/4.9//9.8/4.9

VAR	MODEL	CUSTOMER	CAT.NO.	A	HP	VOLTS	SF	AMPS	HZ	RPM	PROTECTOR	ROTATION	DESCRIPTION/REMARKS
001	S55CXPNA-7672	WHOLESALE- FLUID SYSTEMS	----	9.690	3/4	115/230	1.0	10.0/4.9/9.8/4.9	60/50	1725/1425	AUTOMATIC	CCW LEAD END REV	S55, RES. MTD, BALL BRG, OPEN ALL ANGLE



NIDEC MOTOR CORPORATION 15-Jul-20

NEW DRAWING CREATED	REVISION RECORD FOR:	JC 74143
ISSUED BY:	ENGINEER APPROVED:	J. MENDOZA
I. GOMEZ		

TOLERANCES ON DIMENSIONS (UNLESS OTHERWISE SPECIFIED)	
INCHES .XX = $\pm .010$ .XXX = $\pm .005$	mm
ANGLES $X^\circ = \pm 1^\circ$	

NIDEC MOTOR CORPORATION			
INFORMATION DISCLOSED ON THIS DOCUMENT IS CONSIDERED PROPRIETARY AND SHALL NOT BE REPRODUCED OR DISCLOSED WITHOUT WRITTEN CONSENT OF NIDEC MOTOR CORPORATION			REVISION DATE:
TITLE			14-JUL-20
CUSTOMER DETAIL DRAWING	CODE	ITEM NO.	REV
V02	833690	--	1 OF 4
SHEET NUMBER			DWG SIZE
1 OF 4			B

## Special Application Carbonator Pump Single Phase Open Drip Proof (ODP) Split Phase



### APPLICATIONS:

Designed end shield with extended hub and short slotted shaft for close coupling carbonator pump to motor.

### FEATURES:

- For Carbonator Duty Only
- Reversible Rotation
- Automatic Reset Thermal Overload Protector
- Threaded Conduit Hub
- All Ball Bearing Construction
- Green Ground Lead
- Special Slotted Shaft

### Resilient Base

HP	RPM	Voltage	Frame	Catalog Number	List	Discount Symbol	SF	"C" Dim. (inches)	Ship Wt. (lbs)	Full Load Amps	Notes
1/4	1800	100-120 & 200-240 V	48YZ	6001	\$202	DS-3FMP	1.00	7.7	15	4.5-4.7/2.2-2.4	61
	1800	115 V	48YZ	1004	\$145	DS-3FMP	1.00	7.7	15	5.0	61
1/3	1800	100-120 & 200-240 V	48YZ	6079	\$220	DS-3FMP	1.00	8.3	16	6.4-6.3/3.0-3.1	61
	1800	115 V	48YZ	1003	\$174	DS-3FMP	1.00	7.7	14	6.5	61
1/2	1800	115 V	48YZ	6080	\$189	DS-3FMP	1.00	8.7	16	8.4	24
	1800	120/240 V	48YZ	6078	\$265	DS-3FMP	1.00	8.7	17	7.5/3.6	61
3/4	1800	115/230 V	48YZ	872	\$310	DS-3FMP	1.00	9.7	25	10.0/4.9/9.8/4.9	61

Note 24 Automatic Reset Thermal Protector Overload  
Note 61 Sleeve Bearings